



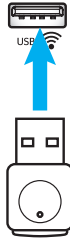
DLP® Projector

INITIAL SETUP

Prepare for Multimedia Functions

Step 1:


Installing USB Wi-Fi Dongle



In order to utilize the embedded HDCast Pro Device Wireless Projection, you need to install the USB Wi-Fi dongle into the appropriate USB port on the back of the projector. Once the USB Wi-Fi dongle has been installed, HDCast Pro Device Wireless Projection are ready for use.

Step 2:

Setting up HDCast Pro



Before getting started, please ensure that you have installed the USB Wi-Fi dongle into the USB port labeled USB . If you have not installed the USB Wi-Fi dongle, please **STOP HERE** and go to back to “**Step 1 Installing USB Wi-Fi Dongle**”. Once the USB Wi-Fi dongle has been installed, please proceed to **A**.

A. To download HDCast Pro for Android and iOS:

Scan QR Code below to download the App from their respective App Store OR search for “HDCast Pro” in the Apple App Store or Google Play Store.

B. To download HDCast Pro for Windows 7/8.1/10 and Mac OS X:

Go to <http://www.optoma.com/hdcastpro> or scan QR Code below for direct access to the webpage from any iOS or Android Smartphone/Tablet – or Windows or Mac computer.

C. Use the  on the projector keypad or the  on the remote control and select **Network Display** to access the HDCast Pro home screen. Open the HDCast Pro APP on your iOS, Android, Windows, or Mac OS X device, select the HDCast Pro icon and then select HDCast Pro from the list (example: HDCastPro_EF4F35F6). Select **OK** when the “Go to Wi-Fi Setting” prompt appears. Select HDCastPro_XXXXXXX, enter the password located on the Projector HDCast Pro Home Screen, then return to the HDCast Pro App. If prompted, select HDCastPro_XXXXXXX from the list.

D. Connect HDCast Pro to existing Wi-Fi network:

Select **Conference Control > Network Setting** from the HDCast Pro App. Select the arrow to the right of the Internet icon. Select the existing Wi-Fi network you wish to connect from the list. Enter the Wi-Fi password when prompted, and then select **OK**. Once HDCast Pro is connected to the local Wi-Fi network, there is no need to connect directly to HDCast Pro. Simply close and then open HDCast Pro App, select the HDCast Pro icon, and select HDCast Pro (w/ Wi-Fi router icon) from the list.

E. All HDCast Pro functions can be accessed from the HDCast Pro App.

Want to Screen Mirror in Android and Windows?

Simply select “Mirror Off” to enable Screen Mirror (the icon will change from Mirror Off to Mirror On – displaying the current status).

F. For more information including access to HDCast Pro datasheet, iOS App, Android App, Windows App, and Mac OS X App – visit www.optoma.com/hdcastpro.



MULTIMEDIA



USB Reader

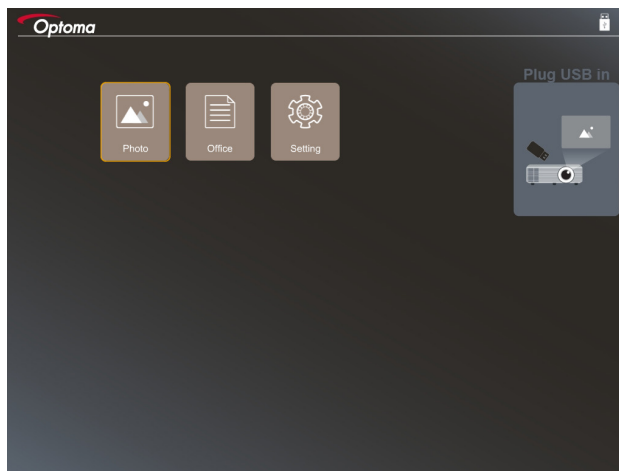
Photo and document viewer

Users do not always require a PC or mobile device to display content. With the built-in USB reader, simply by plugging in a USB storage device, users can directly view photos and documents including PowerPoint, Word, Excel and PDF file formats.

Note: A USB flash disk must be plugged into the projector if you want to use the USB Reader function.

Follow these steps to playback photo or office files on your projector:

1. Connect one end of the power lead to the projector and the other end to the wall outlet. Then turn on the projector by pressing the “⏻” button on the projector keypad or the remote control.
2. Plug in a USB flash disk to your projector.
3. Press the  on the projector keypad or the  on the remote control and select **USB Reader**. The USB Reader page opens.



4. Access the USB Reader menu and select the multimedia files: **Photo** or **Office**. Or select the **Settings** option to change settings for photo or office.

USB support format

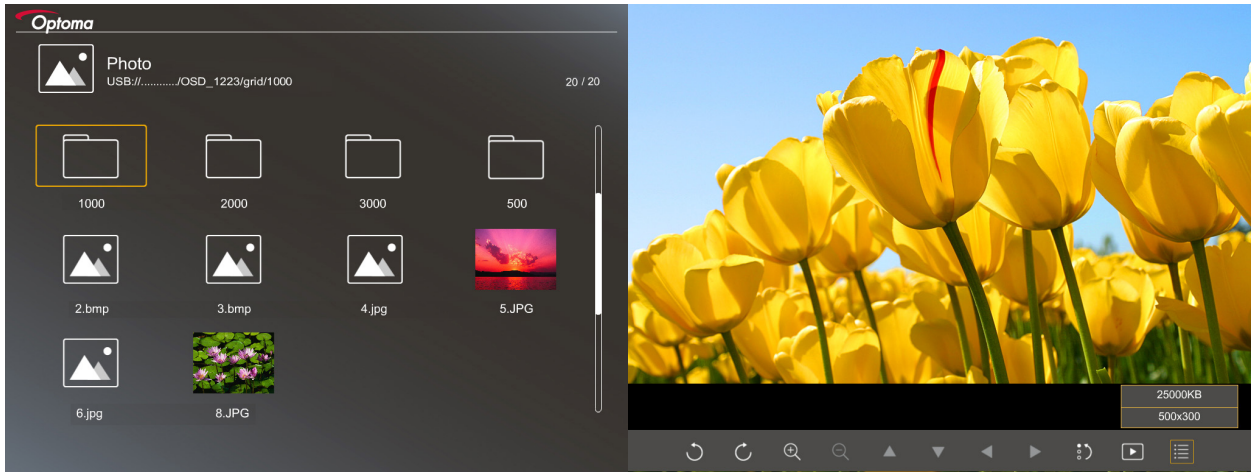
Storage	Device type	File system	File & Dir Level
USB	USB Flash	FAT16, FAT32, NTFS, ExFAT	<ul style="list-style-type: none">• Supports up to 999 directories/files• Path name length limit is 100 characters

Note: The supported USB storage size is up to 64GB.

MULTIMEDIA

Photo

Press the ◀, ▶, ▲, or ▼ to select a photo and then press the “←” button on the projector keypad or the **Enter** button on the remote control to access the photo viewer control.



Press the ◀, ▶, ▲, or ▼ to select a control function on the screen and then press the “←” button on the projector keypad or the **Enter** button on the remote control to execute the control function.

The control button icons and functions are included in the following table:

Function icon	Function description
	Rotate photo by 90 degrees
	Zoom in or Zoom out
	<ul style="list-style-type: none"> • Pan move when zoomed in • Move to the previous or next page when toolbar disappears (not supported when zoomed in)
	Reset the photo size to the default size (1x)
	View photos in a slideshow
	View photo information
	Move to the previous or next page

MULTIMEDIA

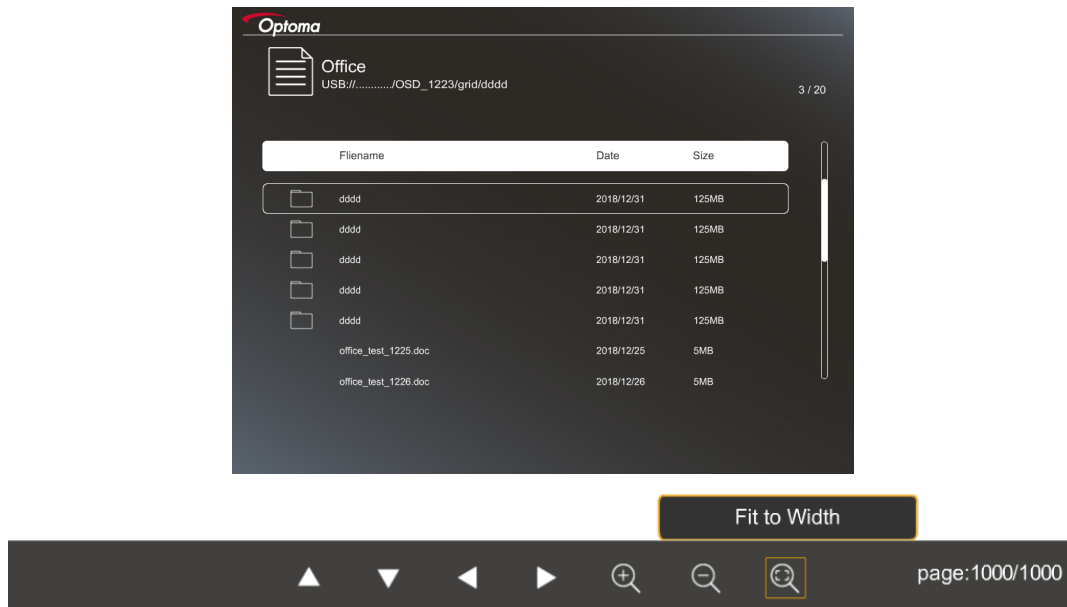
Photo support format

Image format	Profile	Color space	Size limitation
JPEG	Baseline	YUV400	8000*6000
		YUV420	8000*6000
		YUV422	8000*6000
		YUV440	8000*6000
		YUV444	8000*6000
	Progressive	YUV400	Width <= 8000 and height <= 6000
		YUV420	
		YUV422	
		YUV440	
		YUV444	

- Suggestion: Limit supported size of BMP and JPG progressive file.
- BMP resolution supports up to 1600x1200.
- JPEG progressive resolution support up to 1600x1200.

Office

Press the ◀, ▶, ▲, or ▼ to select a document and then press the “←” button on the projector keypad or the **Enter** button on the remote control to access the document viewer control.





Press the ◀, ▶, ▲, or ▼ to select a control function on the screen and then press the “←” button on the projector keypad or the **Enter** button on the remote control to execute the control function.

The control button icons and functions are included in the following table:

Function icon	Function description
	Zoom in or Zoom out Note: The default magnification is set by the system.
	<ul style="list-style-type: none"> • Pan move when zoomed in • Move to the previous or next page when toolbar disappears (not supported when zoomed in)

MULTIMEDIA

Function icon	Function description
	Fit to height, Fit to width, or Fit to screen
page: 1000 / 1000	Current page / Total pages
 (on the remote control)	<ul style="list-style-type: none"> Move to the previous or next page Switch the worksheet in Excel

Document support format

File format	Support version	Pages/lines limitation	Size limitation	Comment
Adobe PDF	PDF 1.0	Up to 1000 pages per file	Up to 75 MB	-
	PDF 1.1			
	PDF 1.2			
	PDF 1.3			
	PDF 1.4			
MS Word	British Word 95	Because office viewer does not load all pages of MS Word file at the same time, there are no obvious limitations of page and line	Up to 100 MB	Not support Bold Text in Simple Chinese front
	Word 97, 2000, 2002, 2003			
	Word 2007 (.docx), 2010 (.docx)			
MS Excel	British Excel 5, 95	Row Limit: up to 595	Up to 15 MB	Not support password-protected sheets
	Excel 97, 2000, 2002, 2003	Column Limit: up to 256		
	Excel 2007 (.xlsx), 2010 (.xlsx)	Sheet: up tp 100		
	Office XP Excel	Note: Any one of three limitations above can not appear on one excel file simultaneously.		
MS PowerPoint	British PowerPoint 97	Up to 1000 pages per file	Up to 19 MB	No support SlideShow order
	PowerPoint 2000, 2002, 2003			
	PowerPoint 2007 (.pptx)			
	PowerPoint 2010 (.pptx)			
	Office XP PowerPoint			
	PowerPoint presentation- -2003 and earlier(.pps)			
	PowerPoint presentation- -2007 and 2010 (.ppsx)			

Note: Animations in PowerPoint are not supported.

MULTIMEDIA

USB Display (mobile device connect to USB port directly)

Screen mirroring by USB cable

Mirror your iOS or Android screen by connecting the device to the projector with your USB charging cable. Conveniently and easily share your content to the big screen.

Note:

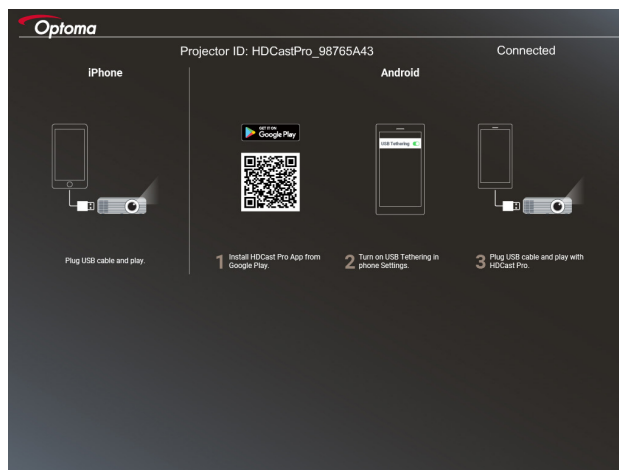
- *The USB Display function requires a tethered connection from the smart device to the projector.*
- *Mirror your iOS or Android screen by connecting the device to the projector with your USB charging cable. Conveniently and easily share your content to the big screen.*
- *Android devices need to download the free mobile APP for the screen mirroring.*

Follow these steps to mirror your smart device's screen to the projector:

1. Connect one end of the power lead to the projector and the other end to the wall outlet. Then turn on the projector by pressing the “⏻” button on the projector keypad or the remote control.
2. Do any of the following:

For iOS:

- a) Press the  on the projector keypad or the  on the remote control and select **USB Display**. The USB Display page opens.



- b) Connect the projector and your smart device with a USB cable. Your smart device's screen will be automatically mirrored to the projector.

MULTIMEDIA

For Android:

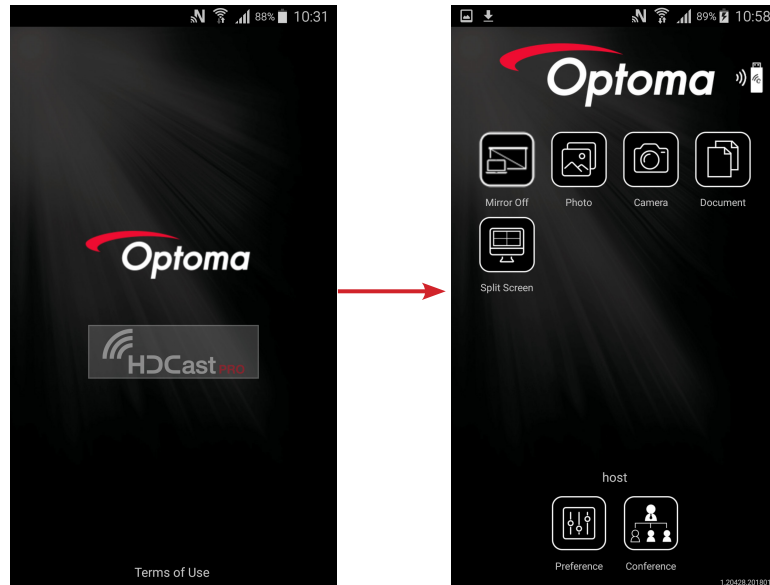
a) Download the **HDCast Pro** app from Google Play and install to your smart device.

b) Tap **Settings > More** and enable **USB Tethering** on your smart device.

Note: *The location of the tethering function may vary depending on your smart device.*

c) Connect the projector and your smart device with a USB cable.

d) Open the HDCast Pro app on your smart device and tap on the HDCast Pro icon. Your smart device's screen will be mirrored to the projector.



Note:

- Supported operating system is Android version 5.0 or higher and the recommended CPU is Quad Core or higher.
- It is required 3.5mm phone jack or speaker to line out mobile content audio.
- The USB Display does not support apps with DRM (Digital Rights Management).
- Please use the default cable accessory that is shipped with your smart device.
- Those smart devices that support USB type C may not support USB Display function. The USB Display function uses USB 2.0 interface.

MULTIMEDIA


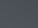
Network Display

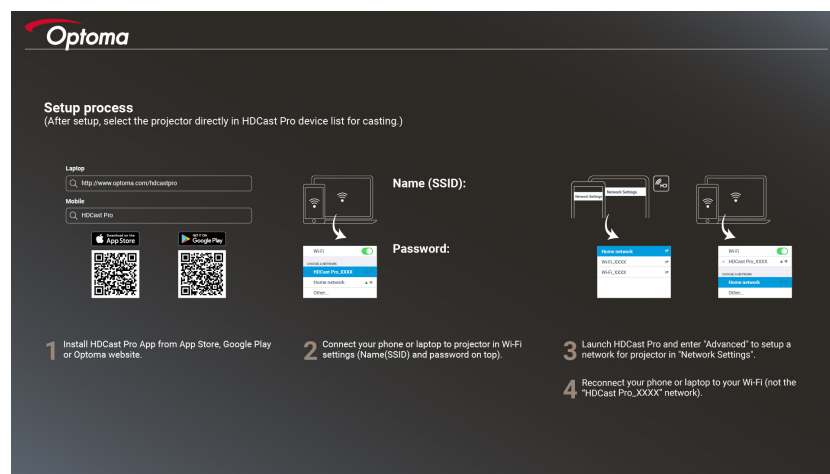
Wireless projection with optional WiFi dongle

With an optional WiFi dongle and using the free mobile APP, you can wirelessly connect to your laptop, tablet or mobile device and project your content to the big screen. Up to 4 devices can be connected to the projector simultaneously.

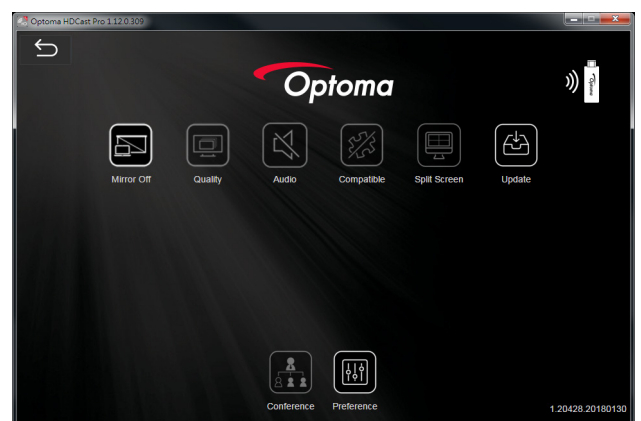
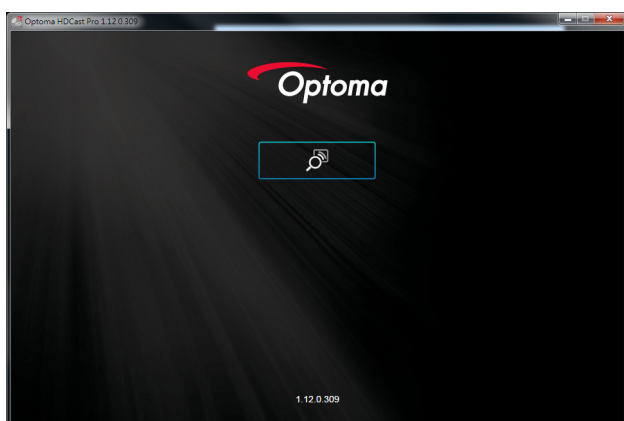
With WiFi display, you can eliminate cable clutter and increase connection versatility.

Follow these steps to mirror your smart device's screen to the projector:

1. Connect one end of the power lead to the projector and the other end to the wall outlet. Then turn on the projector by pressing the "⏻" button on the projector keypad or the remote control.
2. Press the  on the projector keypad or the  on the remote control and select **Network Display**. The Network Display page opens.



3. Depending on the operating system of your mobile device, open the App Store (iOS) or Google Play (Android) and install the **HDCast Pro** app on your smart device. If you are using a laptop, download the **HDCast Pro** app from www.optoma.com/hdcastpro website.
 4. Plug in a Wi-Fi dongle (optional) to your projector.
 5. Connect your smart device or laptop via Wi-Fi to the projector. An example connection parameters are as follows:
 - SSID of the projector: **HDCastPro_XXX**
 - Wi-Fi password: **XXX**
- Note:** The projector SSID and Wi-Fi password varies depending on the connected Wi-Fi dongle.
6. Open **HDCast Pro** app on your smart device or laptop and configure **Network Settings** in Advanced menu to establish a connection to the projector.
 7. Connect your smart device or laptop to your preferred Wi-Fi access point other than **HDCast Pro_XXX**.



MULTIMEDIA

Supported Features

Device	Feature	Limitation
Laptop	Mirroring	Windows 10 Note: <i>Extension mode is not supported.</i>
	Split Screen	
iOS	Photo	Screen Mirroring and video content are not supported
	Document	
	Camera	
	Split Screen	
Android	Mirroring	Video content is not supported
	Photo	
	Document	
	Camera	
	Split Screen	

System Requirements

Operating System / Item	Requirement
Windows:	
CPU	Dual Core Intel Core i 2.4GHz
Memory	DDR 4GB and above
Graphics card	256MB VRAM or above
Operating system	Windows 7 / 8.0 / 8.1 / 10 or above
Note:	
<ul style="list-style-type: none"> • <i>ATOM and Celeron processors are not supported.</i> • <i>Operating system with starter version is not supported.</i> • <i>Extension mode may not support some laptops with Windows 10 operating system.</i> 	
Mac:	
CPU	Dual Core Intel Core i 1.4GHz or higher Note: <i>PowerPC is not supported.</i>
Graphic card	Intel, nVIDIA, or ATI graphics card with 64MB VRAM or above
Operating system	Mac OS X 10.11 or above
Note: <i>Please ensure the operating system is up to date.</i>	
iOS:	
iOS	iOS 10 or above
Device	All iPhone™ models after iPhone 5
	All iPad™ models after iPad mini 2
Storage	At least 40MB of free storage space
Android:	
Phone/Pad	Android 5.0 or above with 1GB RAM
Resolution	WVGA ~ 1080p
CPU	Quad Core or above
Storage	At least 40MB of free storage space

